

Board of Directors

Deborah Wright - President
 Michael Beadle - Vice President
 Ruth Mandernach - Secretary
 David Won - Treasurer
 Hayes Noble
 Irvin Porter
 Jim Arce
 Jim Upshaw
 Joanna Dunn
 Marcia Evans
 Mark Frey
 Nannette Notor
 N'Yisrela Watts-Afriyie
 Paul Nibarger
 Sandy Thoits
 Sarah Reyes Gibbs
 Tracie Lyons

Ex-Officio

Mark Hong - Synod Exec. of
 Southern CA & Hawaii
 Nancy Martin Vincent - Synod Exec.
 of the Pacific
 Seth Normington - Stated Clerk
 Synod of the Pacific



Dick Young
Executive Director

Co-Opted Board Members

Brian Burns - Synod of the Pacific
 Dir. of Business
 Peter Gernold
 Peggy Hall
 Carol Sandmeier
 Jan Hartman
 Deana Reed
 Lisa Greysheild



Jesus Preciado

Director of Housekeeping



Mark Ellender

Director of Facilities & Grounds



Laura Mulato

Director of Guest Services



Sara Tillema

Director of Programs



Dayna Titus

Director of Finance and
 Business Operations



Claudia Carrizoza

Director of Food Services



Jesus Preciado

Director of Housekeeping



Marisa Estrada

Housekeeping Inspector



Sandra Estrada

Housekeeping Inspector

Housekeepers

Ana Bertha Estrada

Beatriz Herrera

Juana Lucia Ruelas

Lucero Lara

Maria Aguirre

Mayra Diaz

Pablo Perez

Patricia Aguirre

Rafael Lizaola

Vanessa Salinas Vergara

Wendy Artiga



Mark Ellender

Director of Facilities & Grounds



Jose Palomera

Maintenance Lead



Cilvano Vazquez

Construction Lead

Facilities & Grounds Staff

Armando Garcia
Camilo Vazquez

Edgar Vega

Gervin Ramos

Jose Torres (Nacho)

Kathryn Pena

Kyle Bartholomew

Levi Mulato

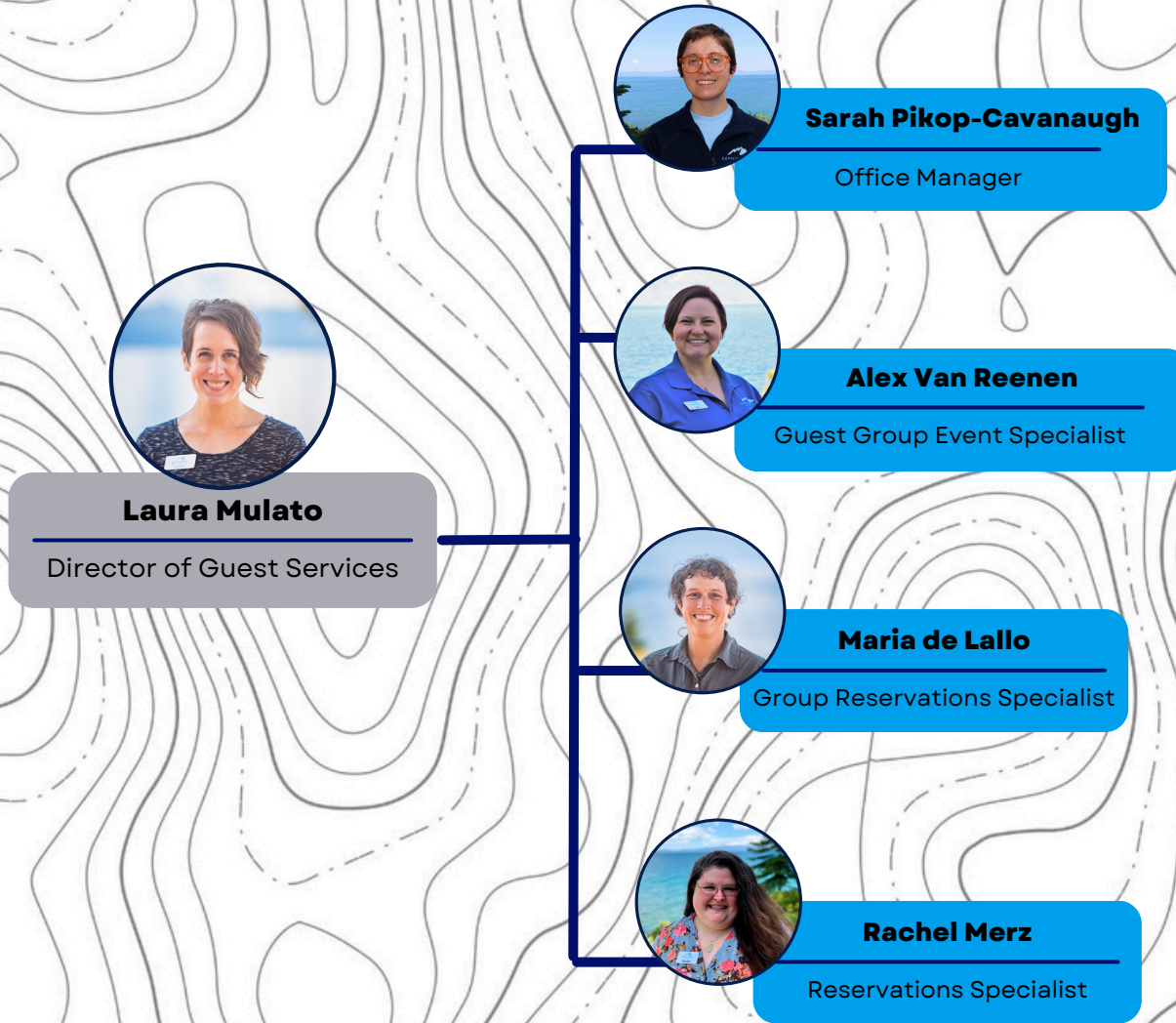
Pedro Vargas

Oscar Vazquez

Richard Gregorio

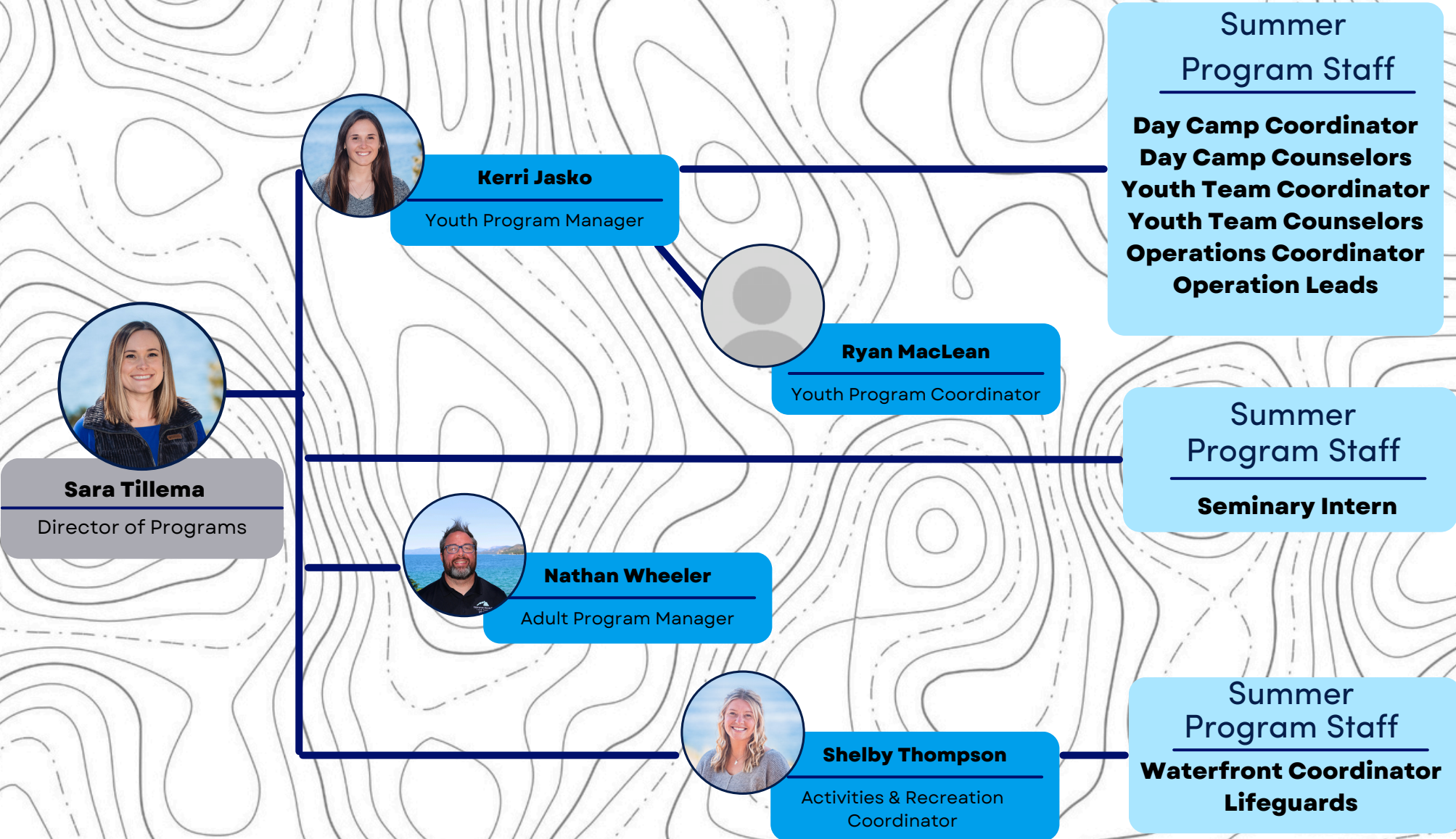
Salvador Escobar

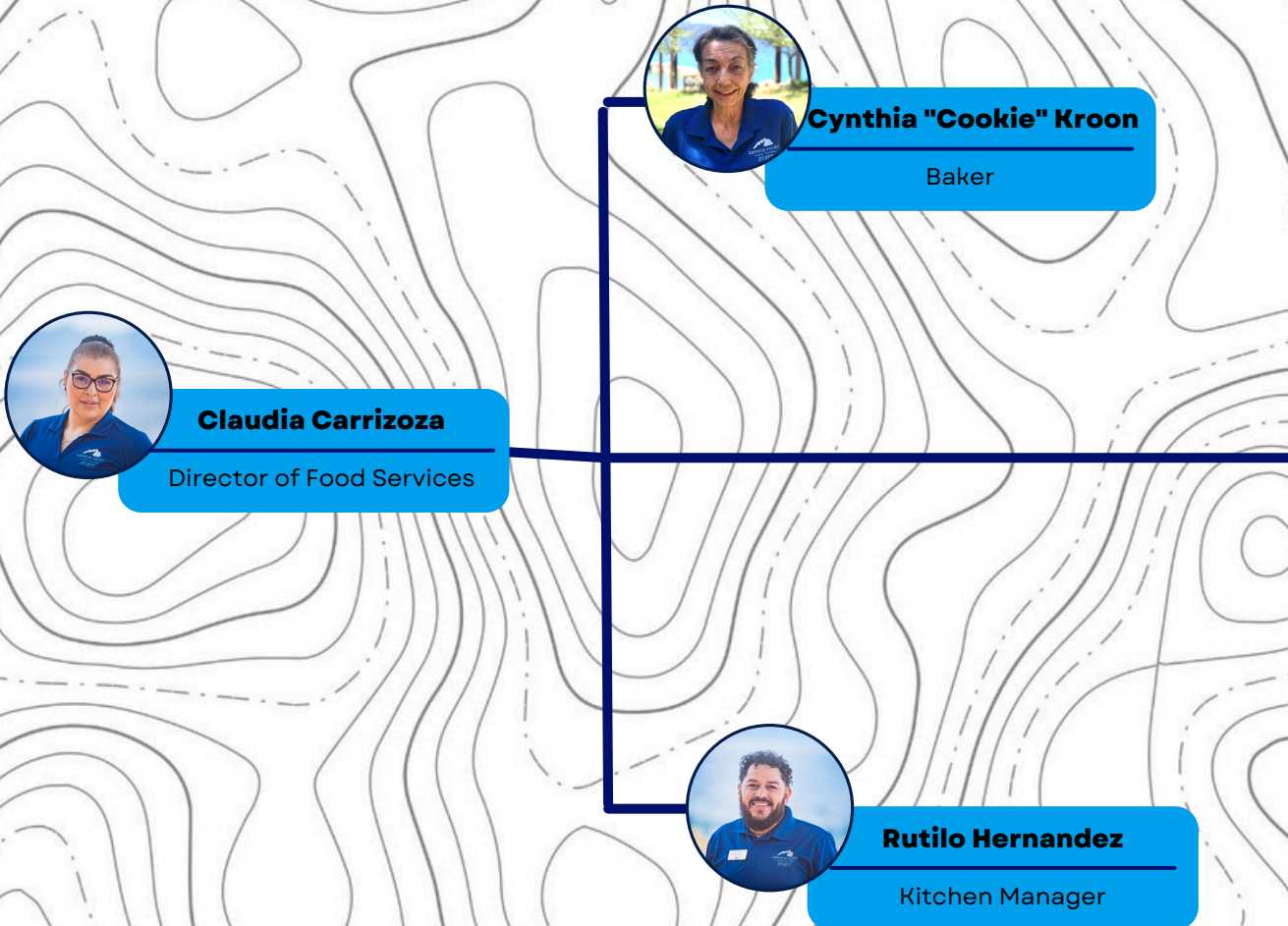
Thea Piscionere



ZEPHYR POINT ORGANIZATIONAL CHART

Programs





Food Services Staff

Alan Weis
Alexis Stracener
Alicia Alvarado Maduena
Ashley Jones
Daniela Salinas Cruz
Edy Hernandez
Emilio Ramos
Gabriel Martinez
Hazel Perez
Hortencia Cesar
Josefina Demazo Perez
Juan Rodriguez
Lilian Siliezar
Luis Flores
Maria Martinez de Schad
Silvia Burgos
Sonia Hernandez
Trent Dowell
Veronica Farias

ZEPHYR POINT ORGANIZATIONAL CHART

Finance & Business Operations

